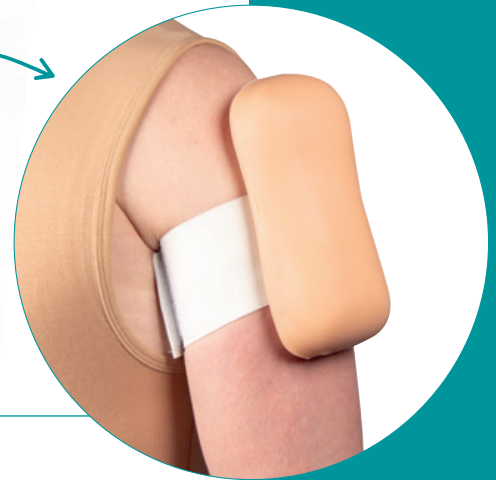




Strap-on vaccination trainer for IM and intradermal injection



This trainer enables

intramuscular injection to be practiced, as is typically done when vaccinating. The model can be used as a vaccination trainer, but also as a normal IM injection trainer and as a subcutaneous injection trainer.

The trainer can be buckled and then simulates a human upper arm. A simulated and easily palpable shoulder anatomy serves as a landmark for the puncture. The back of the trainer is puncture-proof so that there is no danger to the "patient".

The injection can be done with normal needles and syringes, the injection of liquid is possible. The model can be dismantled so that the liquid can easily be removed after the exercise.

Thanks to the new material, the arm feels lifelike and the puncture points are not visible, so that many hundreds of punctures are possible before the vaccination trainer has to be replaced.



Product features:

- Intramuscular injection
- Subcutaneous injection
- Injecting liquid
- Anatomical landmarks
- High quality material

Dimensions: 17,5 x 8,5 x 5,0 cm
Weight: 300 g



ERLER ZIMMER

Hauptstr. 27 · D-77886 Lauf
Tel.: (+49) 7841 / 6003•0
info@erler-zimmer.de
www.erler-zimmer.de