

Suction·Tube Feeding Simulator

(Suction Training Model Type II + Tube Feeding Components)

LM-097B

Suction Training Model Type II LM-097

Tube Feeding Components LM-097C

Instruction Manual

Thank you for purchasing the LM-097B Suction·Tube Feeding Simulator.

Please read this instruction manual carefully to ensure correct use of the product,
and store it in a safe place for easy access.

KOKEN CO., LTD.

1-4-14 Koraku, Bunkyo-ku, Tokyo 112-0004 JAPAN

URL:<http://www.kokenmpc.co.jp>

E-mail:customer@kokenmpc.co.jp



Handling and Safety Precautions

These precautions should be strictly observed in order to ensure safe, long-term use of the product.

The following precautions should be observed particularly strictly:

1. This model is manufactured to feel like a living human body to the touch. Forceful or careless handling may damage the model.
2. Any suction catheters, tracheostomy cannula, and feeding tubes used for training should be used only with the model. Never use these items with a living human body.
3. Never put the simulated sputum provided as an accessory into human body (eyes or mouth). (The simulated sputum is manufactured from a material used for cosmetics, and is manufactured using materials that meet The Japanese Standards of Cosmetic Ingredients, as well as Supplement to the Japanese Cosmetic Ingredients Codex.)
4. Liquid leakage may occur with improper use, and dirty the surroundings. Please read the instruction manual carefully before use. It is recommended that the model be used in a place that will not be damaged if leakage occurs, or on top of an absorptive sheet.
5. During practice and clean-up, please make sure that the head of the model is not lower than the body when the tube feeding tank contains water or other liquids. Otherwise, leakage will occur.
6. This product is intended for use in standard operating environments. Do not use it in heavy industrial settings.
7. This model uses urethane foam for some of its parts, and may be susceptible to damage from pests that are attracted to urethane foam (such as insects in the ant family).
When storing this model, ensure that thorough measures are taken to prevent pest damage before storing. The company will not be involved with or held liable for pest damage that occurs during storage.

Maintenance of the model after use

1. Do not place objects on the model main body, as this may cause deformation.
2. To clean the model, use a neutral solvent diluted with water, or use water, and wipe the model with a piece of gauze moistened with the solvent or water.
NOTE: Do not use thinner, benzene or similar solvents.
3. Store the model in a location where it will not be exposed to direct sunlight or ultraviolet rays.
4. Any marks made using water-based and oil-based pens, pencils, chalk, paint, etc. will penetrate into the model and cannot be erased. Please be sure never to use these items.

1. The contents of this instruction manual are subject to change without notice.
2. This instruction manual may not be reproduced in part or in its entirety without permission.
3. Please contact the manufacturer in the event that any errors or omissions are found in the contents of this instruction manual.
4. This product should be used only as described in this instruction manual. In particular, the product should not be used in any way that contravenes the precautions noted in the instruction manual.

Table of Contents

1. Outline and Features
2. Components
3. Handling the Model
4. Caring for the Model
5. Specifications

1. Outline and Features

Outline

This model can be used to practice the insertion of suction catheters into the nasal cavity, oral cavity and tracheostomy site, as well suction procedures, nasogastric tube feeding, and gastrostomy care procedures, routinely applied in the nursing and caregiving fields.

The facial region can be divided into two halves along the midline, allowing confirmation of the actual insertion status of a suction catheter and feeding tubes.

The tube feeding components come with an internal tank, allowing nasogastric tube feeding and gastrostomy management using actual liquids. The tank has a drainage function, so there is no need to worry about overflow when the tank becomes full.

Insertion of suction catheters into the nasal cavity, oral cavity and tracheostomy site and suctioning practice, which are done with the Suction Training Model Type II, can also be performed with the tube feeding components attached.

The following catheter sizes can be used with the model.

Suction-Tube Feeding Simulator

Suction catheters	12 Fr ~ 16 Fr
Feeding tube	8 Fr ~ 16 Fr
Gastrostomy tube	20 Fr

Features

- **Suction Training Model Type II**

Silicone rubber is used for the model, so that students can practice with an exterior and feel that are very close to those of a living human body.

The simulated sputum provided as an accessory can be inserted into the nasal cavity, oral cavity or trachea, for training. This allows students to train in the same manner as the actual procedure, and enables more effective suction training. (Viscosity of the simulated sputum can be controlled using water.)

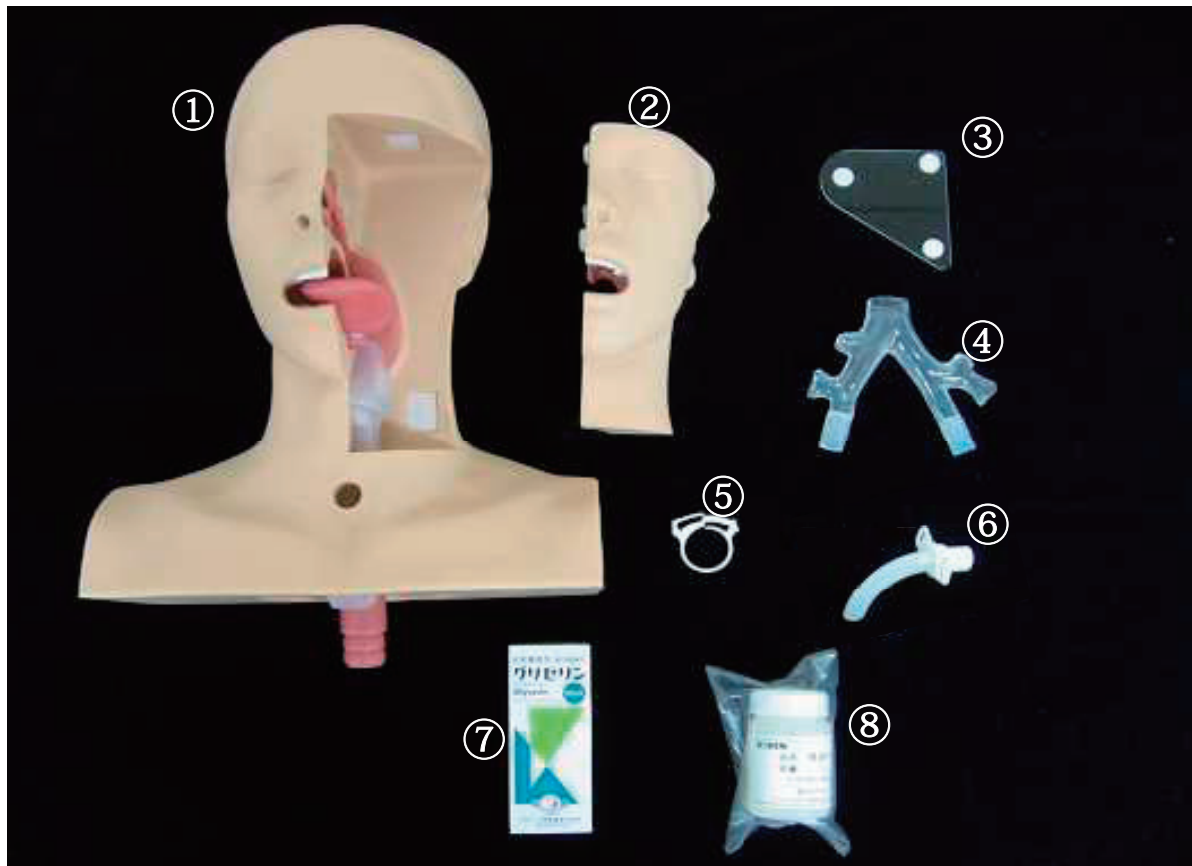
- **Tube feeding components**

Insertion of the feeding tube all the way to the gastric fundus can be practiced. Air bubble sounds can be heard and suction of gastric fluid can be used to confirm the insertion of the tube. Techniques can also be practiced using actual nutrient solution, equivalent to routine nursing care settings.

The model can be taken apart for very easy maintenance. The tanks for liquids are washable, so hygiene is not a worry.

2. Components

Suction Training Model Type II

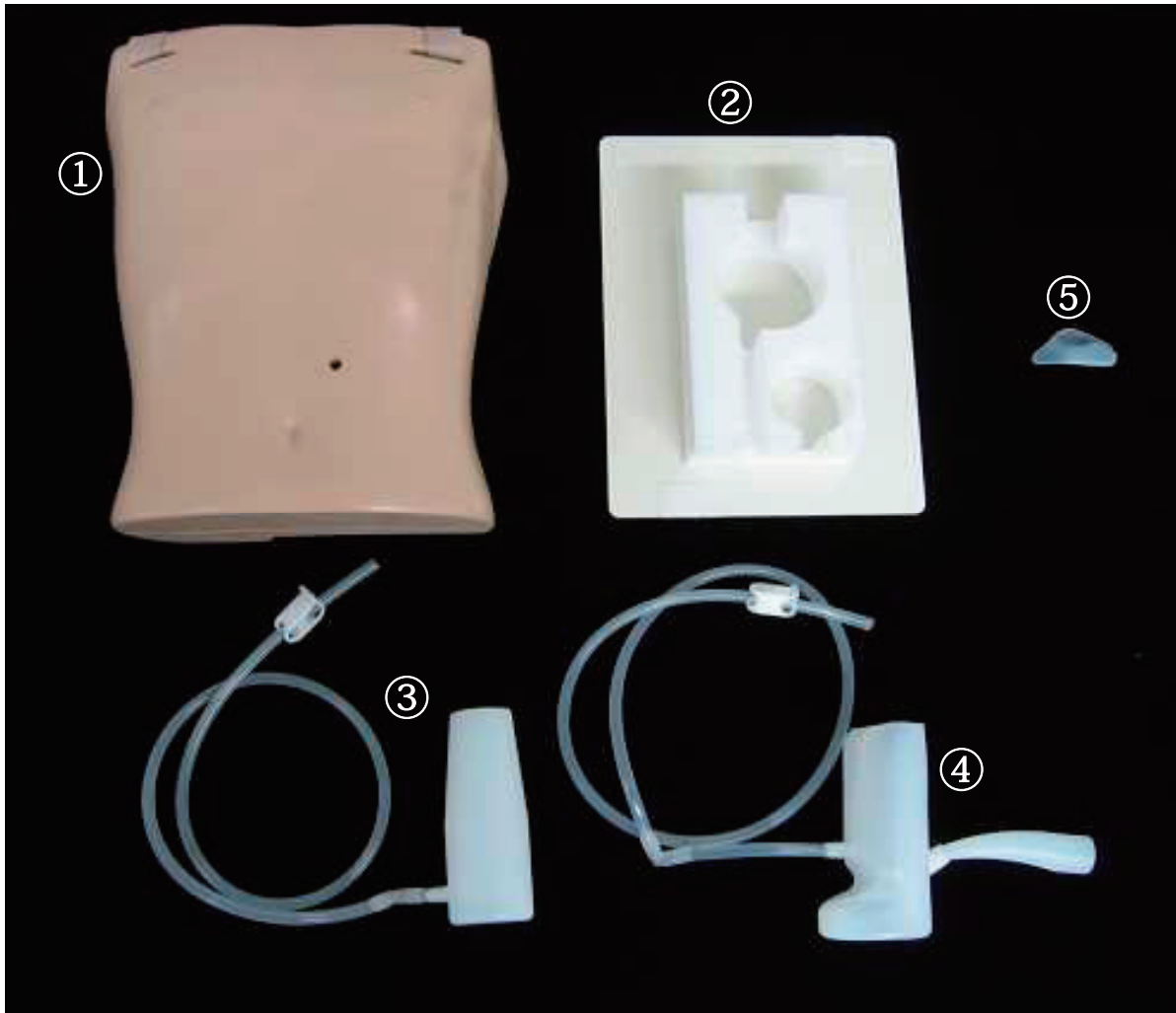


Names of the Components	Quantity
① Suction Training Model Type II main body	1
② Side of face	1
③ Acrylic board for the side of the face	1
④ Bronchus	1
⑤ Clasp for bronchus	1
⑥ Tracheostomy cannula (Exclusively for Life Simulation Models)	1
⑦ Glycerin	1
⑧ Simulated sputum	1
Storage bag	1
Instruction Manual (this document)	1

※ The storage bag for the Suction Training Model Type II is not included in the Suction • Tube Feeding Simulator unit.

※ The tracheostomy cannula is for use with Life Simulation Models only. It is not to be used in humans.

Tube feeding components



Names of the Components	Quantity
① Body	1
② Back plate	1
③ Gastrostomy tank	1
④ Tube feeding tank	1
⑤ Insertion support piece	1
Storage bag	1
Instruction Manual (this document)	1

3. Handling the Model

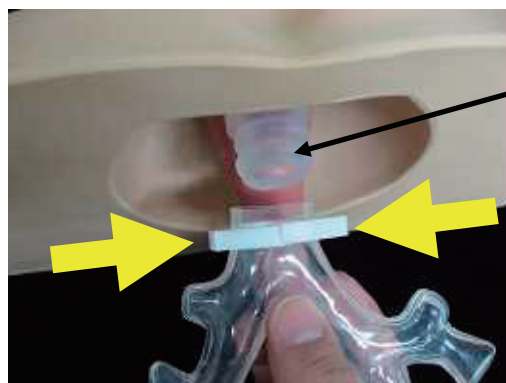
- Suction Training Model Type II

3-1. Connecting the bronchus and main body of the Suction Training Model Type II (when practicing suctioning)

1) Fit the bronchus clasp onto the bronchus.



2) Insert the bronchus into the trachea of the main body of Suction Training Model Type II. With your fingers, tighten the bronchus clasp on the overlapping part to secure to the trachea of the Suction Training Model Type II main body.



Trachea of Suction Training Model Type II main body

With your fingers, tighten the bronchus clasp in the directions indicated by the arrows, to secure the bronchus to the main body of the Suction Training Model Type II.

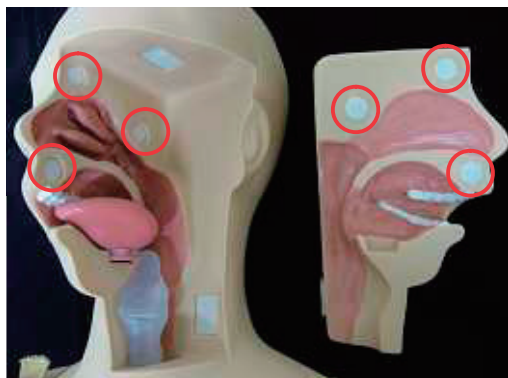
3-2. Apply lubricant (glycerin) inside the nasal and oral cavities.

Apply several drops of the glycerin that comes with the model to a piece of gauze or other soft cloth, and with that gauze spread the lubricant within the entire nasal and oral cavities (tongue and oral cavity walls) so that all surfaces are slick.

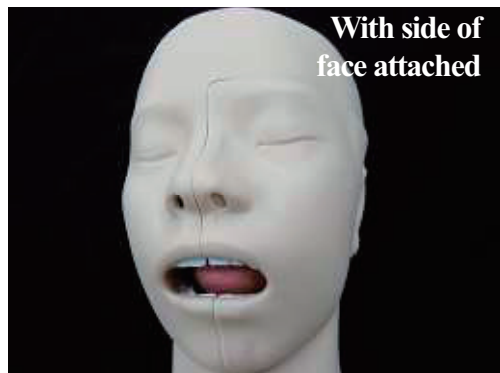


3-3. Place the simulated sputum into the nasal cavity, oral cavity, and bronchus.

1) Before starting training, use a spoon to extract an amount of simulated sputum and place it in sections where suctioning will be practiced. Set the side of the face in place as shown below, matching it to the hook and loop fasteners.



○ Hook and loop fasteners

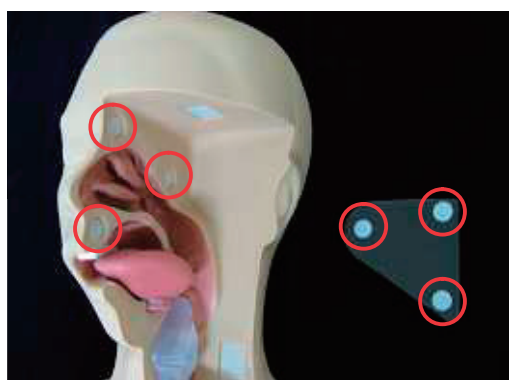


Note: If training is being performed with the side of the face set in place, attach the side of the face without installing the accompanying acrylic board.

2) To visually confirm position of the suction catheters when practicing suctioning of the nasal cavity, attach the acrylic board for the side of the face as shown below before the start of training.

Note: Ensure that the acrylic board for the side of the face is facing in the correct direction.

Note: Use a suction catheter that is 12–16 Fr.



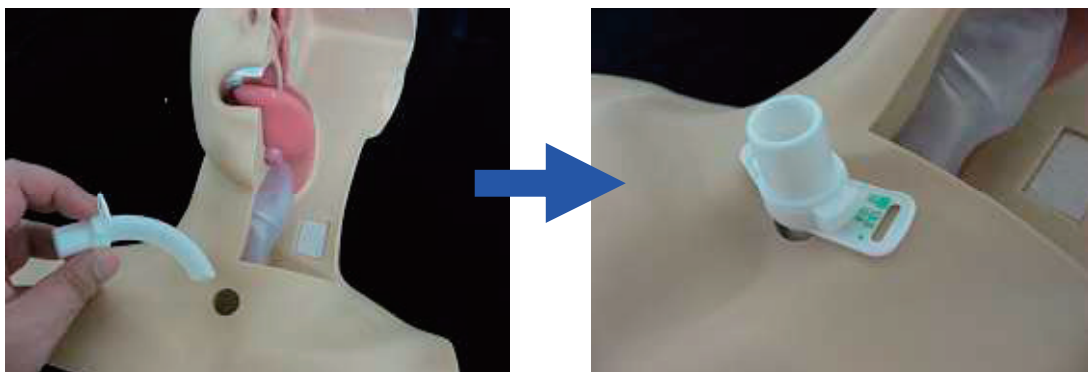
○ Hook and loop fasteners



3-4. Set the tracheostomy cannula in place.

1) The tracheostomy cannula provided as an accessory can be set in place to practice suctioning in the bronchus.

※ The tracheostomy cannula is for use with Life Simulation Models only. It is not to be used in humans.

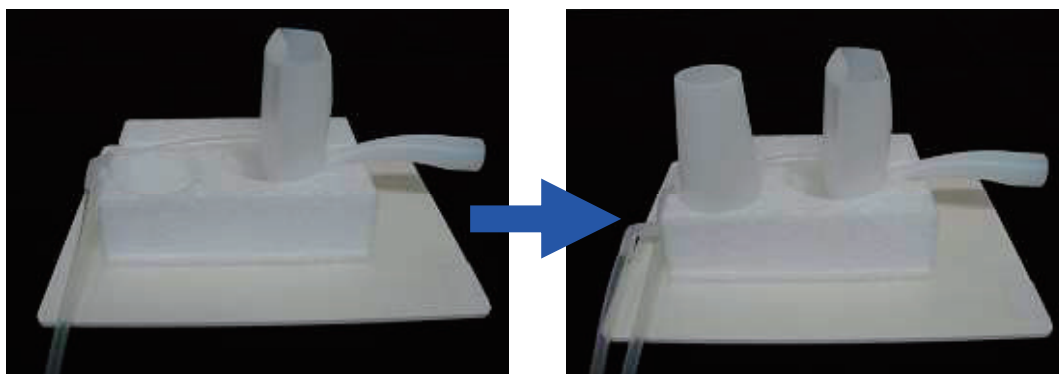


2) Insert a suction catheter to practice suctioning.

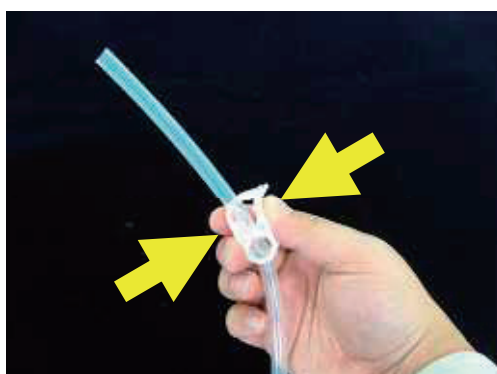
• Suction • Tube Feeding Simulator/Tube Feeding Components

3-5. Set each tank in place. *(When practicing tube feeding and gastrostomy care.)

1) Place the back plate on a flat surface, and set the tube feeding tank and gastrostomy tank in the back plate in the order shown below.



2) Close the cocks on the drainage tubes of the tube feeding tank and gastrostomy tank.



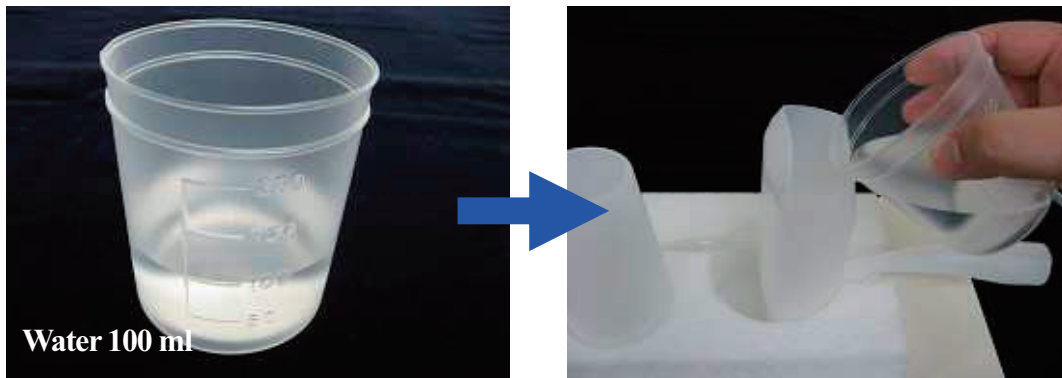
Close the cock by pressing together with the fingers in the direction shown.

3-6. Add water so that air bubbles can be heard when checking an insertion

Pour 100 ml of water into the tube feeding tank set in the back plate.

Note: Be careful not to add too much water, as this may cause leakage or back flow.

Please make sure that the head of the model is not lower than the body once water has been poured in. Otherwise, leakage will occur.

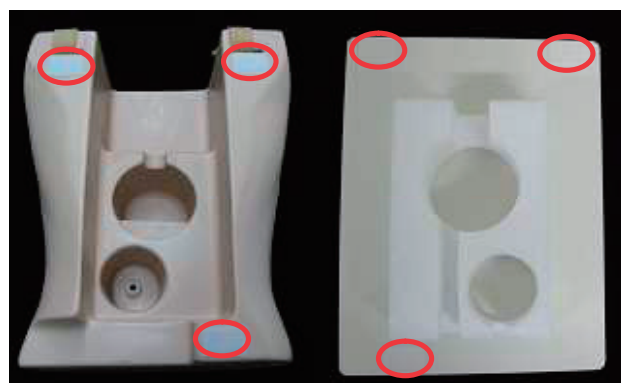
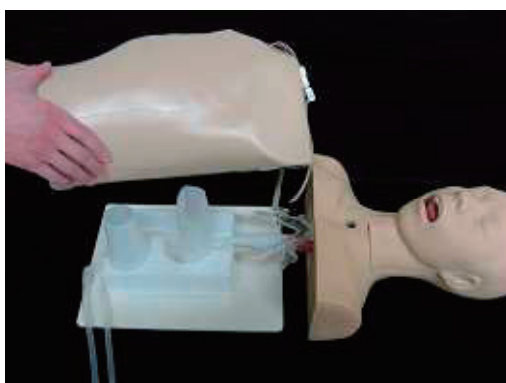


3-7. Connect Suction Training Model Type II and tube feeding body

1) Join the tube feeding tank and the esophagus of the Suction Training Model Type II as shown below.

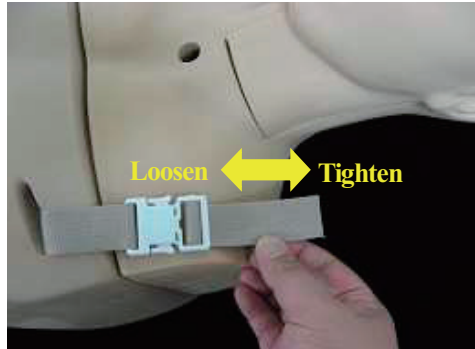


2) Cover with the body. Place the body on the back plate so that the three hook and loop fasteners align properly. Push down lightly on the body so that the hook and loop fasteners adhere to each other.



○ Hook and loop fasteners

3) Wrap the belt on the shoulder of the body over the shoulder of the Suction Training Model Type II and tighten as shown below. Adjust the belt so that there is no slack between the Suction Training Model Type II and the tube feeding body.



4) Attach the insertion support piece to the side of the larynx, as shown below. Attaching the insertion support piece makes it easier for the tube to enter the esophagus. After attaching the insertion support piece, set the side of the face in place.



Note: When using the acrylic board for the side of the face, there is no special need to attach the insertion support piece.

3-8. Fitting the gastrostomy tube into the gastrostomy opening (*When practicing gastrostomy care.)

Note: Use a 20-Fr gastrostomy tube.

Fit the gastrostomy tube in the gastrostomy opening on the left side of the abdomen of the body. Place each gastrostomy tube with reference to its respective handling methods.

*When inserting a gastrostomy tube into the gastrostomy opening, insertion will be easier if a small amount of lubricant (glycerin) is put on the tip of the gastrostomy tube.

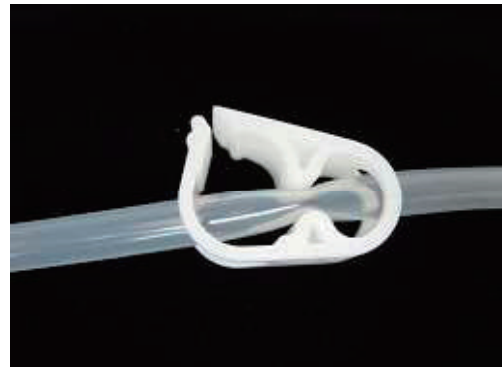
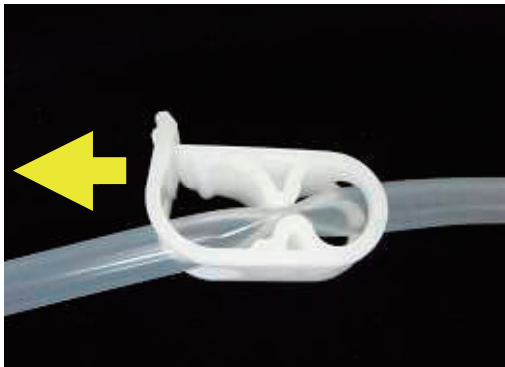


3-9. Practice.

1) Put the model in the position in which practice will be done.

Note: Please use this model in positions from 5° to $<90^{\circ}$. If practice is carried out with the head of the model placed lower than the body, or in an anteflexion or a lateral position, leakage will occur.

2) Put the end of the drainage tube into the drainage receptacle or sink, and open the cocks on the drainage tubes of the tube feeding tank and gastrostomy tank. The cocks can be opened by pushing the lip in the direction of the arrow below.



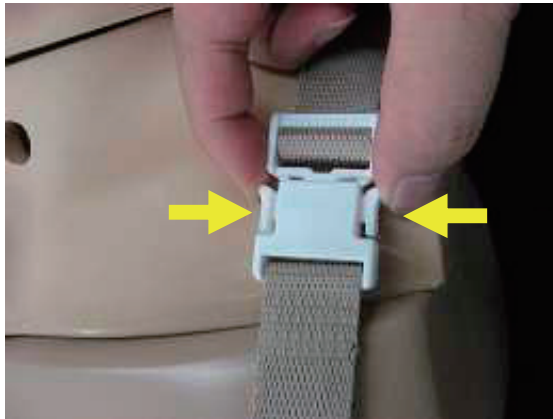
4. Caring for the Model

4-1. Caring for the tube feeding components

1) After confirming that no nutrient solutions or other liquids are draining from the drainage tube, slowly return the model to a horizontal position and close the cock on each tube.



2) Release the shoulder belt.



Release the belt by pressing with the fingers in the directions of the arrows.

3) Take the body off the back plate. Remove slowly, making sure to start from the hook and loop fasteners on the lumbar side while holding the back plate down. Improper order or rough handling may cause leakage.



4) With the cocks on drainage tubes closed, remove the tube feeding tank and gastrostomy tank from the back plate and carry to a sink or other place where they can be washed. Open the cocks on the drainage tubes and wash. For stubborn smudges, wash using a neutral detergent.



5) Wipe marks or smudges from the body and back plate with a towel or cloth moistened with water.



4-2. Care for the Suction Training Model Type II

1) Remove the bronchus from the Suction Training Model Type II main body as shown below.



Open the knobs on the bronchus clasp in the direction of the arrows shown in the figure, and release the lock.

2) Release the lock on the bronchus clasp, and remove the bronchus from the main body of the Suction Training Model Type II.

3) Remove the caps from the ends of the bronchus, and wash the inside of the bronchus with water.



The simulated sputum is water-based, and can be washed with water.

4) If any simulated sputum remains in the nasal cavity and/or oral cavity of the Suction Training Model Type II main body, wipe it off with a piece of gauze or similar material moistened with water. For stubborn smudges, wash with water.



5. Specifications

Suction Training Model Type II

	Length	Width	Height	Weight
Main body	Approx. 40 cm/46 cm (when bronchus is installed)	Approx. 28 cm	Approx. 20 cm	Approx. 1.4 kg

Tube feeding component

	Length	Width	Height	Weight
Main body	Approx. 37 cm	Approx. 31 cm	Approx. 20 cm	Approx. 2.8 kg

Suction-Tube Feeding Simulator

	Length	Width	Height	Weight
Main body	Approx. 72 cm	Approx. 31 cm	Approx. 20 cm	Approx. 4 kg
When stored in bag	Approx. 75 cm	Approx. 32 cm	Approx. 20 cm	Approx. 5 kg

● Optional items

Product name	Product No.
Simulated sputum (100 g x 5pcs)	LM-0701