



Do not mark on the model with a pen or leave printed materials in contact with the model's surface. Ink marks on the model are not removable.

**Caution** Do not mark on the model with a pen or leave printed materials in contact with the model's surface. Ink marks on the model are not removable.

# MW22 Patient Care Simulator "Cherry"

For inquiries and service, please contact your distributor or KYOTO KAGAKU CO., LTD.

## Consumable parts

code	name
11401-010	Insulin injection pad
11401-020	Gluteal IM pads
11401-030	Female genitalia unit
11401-040	Male genitalia unit
11388-200	Injection pad for median antebrachial vein
11401-050	Shoulder IM pads (a pair)
11401-060	Thigh IM pads (a pair)
11401-070	Wound care pad



6 insulin injection pads



4 gluteal IM pads



1 female genitalia units



1 male genitalia units



2 injection pads for median antebrachial veins



2 pairs of 2 shoulder IM pads



2 pair of 2 thigh IM pads



1 wound care pads



## Contents

- **Introduction**  
Manufacturer's note/DOs and DON'Ts .....P.1
- **Before you start**  
Set includes .....P.2
- **Preparation**  
Setting of the legs .....P.3
- **Training**
  - Handling of the model .....P.4
  - Oral and denture care .....P.4
  - Oxygen inhalation .....P.4
  - Intranasal and intraoral catheter .....P.4
  - Tracheotomy care .....P.4
  - TPN and PEG care .....P.5
  - Pressure sores care .....P.5
  - Stomach pumping .....P.6
  - Stoma care .....P.7
  - Urinary catheterization, enema, suppository insertion, perineal care .....P.7
  - Subcutaneous injection .....P.8
  - Gluteal injection .....P.8
  - Wound care .....P.8
  - IV injection and care .....P.9
  - PICC care .....P.9
  - Subcutaneous and IM injection .....P.10



## KYOTO KAGAKU co.,LTD

URL•<http://www.kyotokagaku.com> e-mail•[rw-kyoto@kyotokagaku.co.jp](mailto:rw-kyoto@kyotokagaku.co.jp)

### ■ Main Office and Factory

15 Kitanechoya-cho Fushimi-ku Kyoto 612-8388, Japan  
Telephone : 81-75-605-2510  
Facsimile : 81-75-605-2519

### ■ Kyotokagaku America Inc. : USA,Canada,and South America

3109 Lomita Boulevard, Torrance, CA 90505-5108, USA  
Telephone : 1-310-325-8860  
Facsimile : 1-310-325-8867

The contents of the instruction manual are subject to change without prior notice.  
No part of this instruction manual may be reproduced or transmitted in any form without permission from the manufacturer.  
Please contact manufacturer for extra copies of this manual which may contain important updates and revisions.  
Please contact manufacturer with any discrepancies in this manual or product feedback. Your cooperation is greatly appreciated.

## Manufacturer's note

Cherry is a basic patient care manikin for introductory nursing. The manikin can sit upright without support. Soft life-like materials provides realistic hands-on training. A basic full body, nursing manikin offers training for day-to-day patient care for health care professionals.

### ● Features

- |  |                             |
|--|-----------------------------|
| • Able to sit upright without support                        | • Oxygen/nasal cannula      |
| • Seamless limbs including fingers and toes                  | • Application of restraints |
| • TPN and IV routes to simulate patients with catheter lines | • Dressing wrap capability  |
| • True-to-life joint patient handling                        | • Subcutaneous injection    |
| • Pressure Ulcer varies in depth depending location          | • Wound dehiscence care     |

### ● Training items

- |                                   |                         |                          |
|-----------------------------------|-------------------------|--------------------------|
| • Oral and denture care           | • Body positioning      | • Stoma care             |
| • Stomach pumping                 | • Patient handling      | • Subcutaneous injection |
| • Nasogastric tube placement      | • Passive exercise      | • Urinal catheterization |
| • Oxygen/nasal cannula placement  | • Change of clothes     | • Enema                  |
| • Tracheotomy care and management | • PEG care              | • Suppository insertion  |
| • TPN and PICC care               | • Pressure sores care   | • Perineal care          |
| • Intramuscular injection         | • IV insertion and care | • Wound care             |

## ⚠ DOs and DON'Ts

### DOs

Handle the manikin and the components with care. Storage in a dark, cool space will help prevent the skin colours from fading. The manikin's skin may be cleaned with a wet cloth, if necessary, using mildly soapy water or diluted detergent.

### DON'Ts

Do not let ink from pens, newspapers, this manual or other sources come in contact with the manikin, as they cannot be cleaned off the manikin skin. Never use organic solvent like paint thinner to clean the skin, as this will damage the simulator.

## PICC care



①PICC catheter can be set on the right upper arm for PICC care training.

### Caution

- Liquid can not be injected to the PICC opening.
- The PICC opening is only 2cm depth. Cut the catheter to set it.

## Subcutaneous and IM injection

①Clip the injection pad onto the upper arm.



②Clip the IM injection pad on to the thigh.



**Note** Liquid can be injected to the subcutaneous and IM injection pad.

## After training

①Push the attachment plate inward, pull out the edge of the skin between the attachment and the transparent back plate.



②Take off the skin carefully and remove the sponge and transparent back plate.



③Squeeze the sponge. After all parts get completely dry, reassemble them carefully.



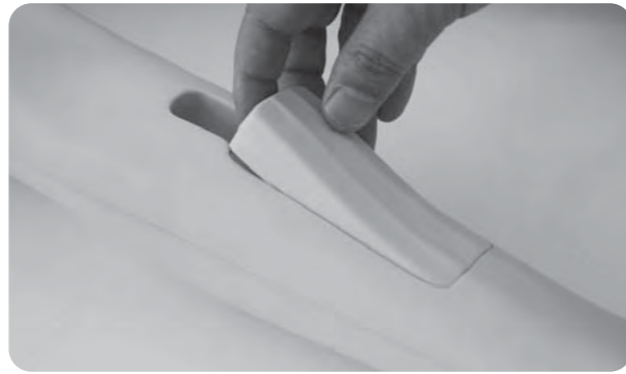
**Caution** Do not pull or twist the sponge. Excessive force may cause breakage.

### IV injection

① Pull the pad by the finger from the slit and remove the pad.



※ The spacer is in right arm. IV injection and care training is available on both arms.



### IV injection preparation

① Fill the bottle with water. Connect the tube of the injection pad to the bottle.



② Connect another tube of the injection pad to the syringe. Slowly pull the syringe to fill the pad with water.



③ Completed.

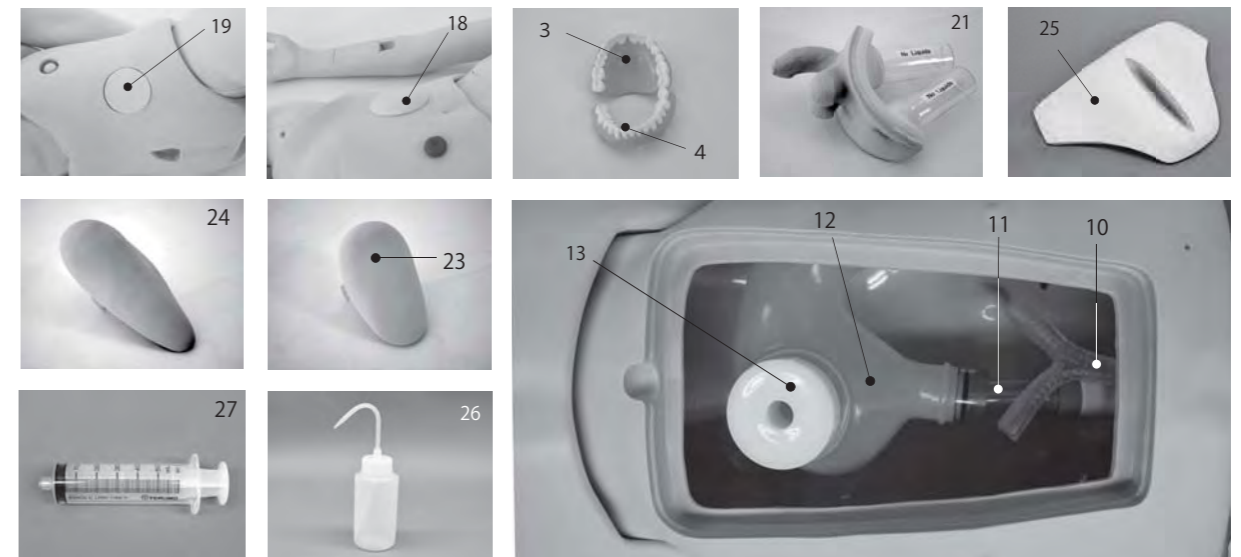
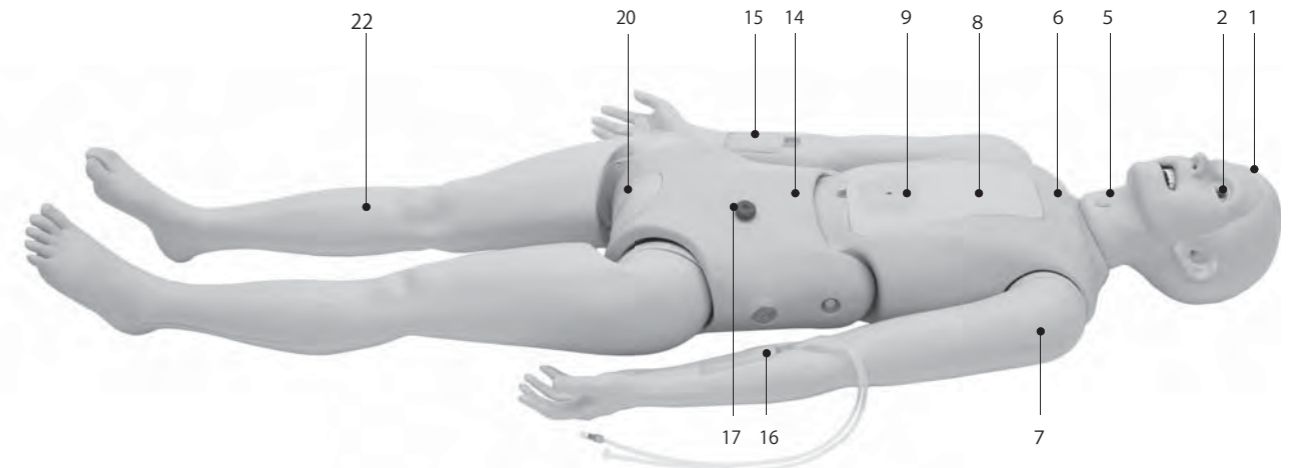


#### Caution

Slowly pull the syringe or the vein in the injection pad may be damaged. If the syringe can not be pulled smoothly, check the connection of the tube and the syringe.

### Set includes

Before your first use, ensure that you have all components listed below.

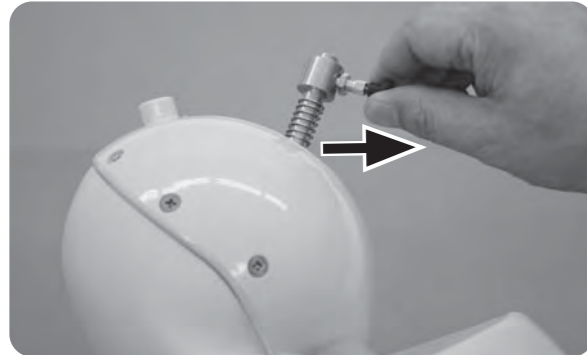


- |                         |                                |                                |
|-------------------------|--------------------------------|--------------------------------|
| 1. Head                 | 10. Bronchi                    | 19. Gluteal injection pad      |
| 2. Eyes                 | 11. Esophagus                  | 20. Female genitalia           |
| 3. Upper Denture        | 12. Stomach                    | 21. Male genitalia             |
| 4. Lower Denture        | 13. Stomach cap                | 22. Legs                       |
| 5. Tracheostomy opening | 14. Lumbar                     | 23. Femoral IM injection pad   |
| 6. Chest                | 15. Spacer                     | 24. Upper arm IM injection pad |
| 7. Arms                 | 16. IV injection pad           | 25. Would care pad             |
| 8. Chest cover          | 17. Stoma                      | 26. Bottle                     |
| 9. PEG opening          | 18. Subcutaneous injection pad | 27. Syringe                    |

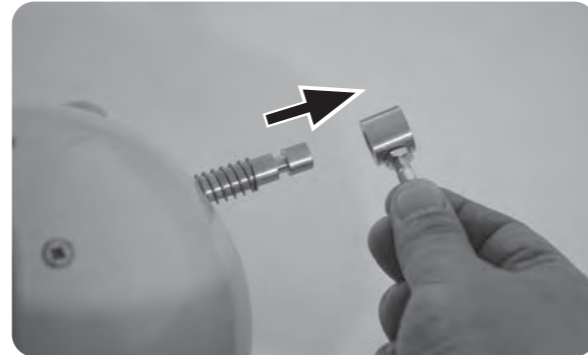
### Setting of the legs

**Note** Legs are separated to be packaged. Please connect the legs to the torso before training.

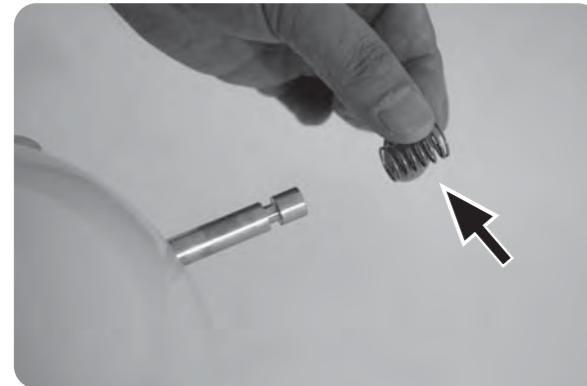
① Pull the black knob to unlock the stopper.



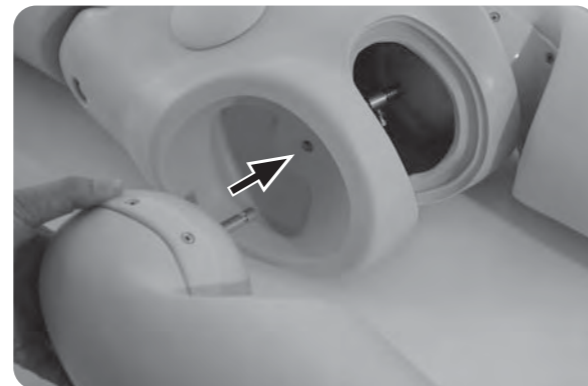
② Keep pulling the knob and remove the stopper from the metal rod.



③ Pull out the spring.



④ Insert the metal rod to the hole of the model.



⑤ Set the spring and stopper to fix the leg.



⑥ Completed. Then set the other leg.



**Caution** Be careful not to lose the spring or stopper in the model.

### Subcutaneous injection

① Push the edge of the pad by finger and remove the pad.



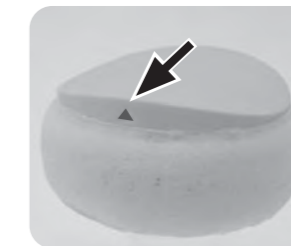
② Set the pad in correct direction.



**Caution** Liquid can not be injected to the subcutaneous injection pad.

### Gluteal injection

① Push the edge of the pad by finger and remove the pad.



※ Set the pad in correct direction by following the guide of the pad and the body.

**Caution** Liquid can not be injected to the gluteal injection pad.

### Wound care

① Set the would care pad on the stoma and subcutaneous injection pad and adjust to fit each other.



## Stoma care



Utilize for the training of stoma care.

## Female catheterization, Enema, Suppository insertion, Perineal care

① Pull the edge of the genitalia unit using your fingers.



② Remove the genitalia unit.



## Male catheterization, Enema, Suppository insertion, Perineal care



① Pull the edge of the genitalia unit and remove it.

Recommended catheter size: Nelaton catheter 13Fr  
Balloon catheter 16Fr

**Caution** Liquid can not be injected to bladder, uterus and rectum.

## Handling of the model

- True-to-life articulation for patient positioning, passive exercise, ect.
- Able to sit in an upright position without support.
- Seamless arms and legs enable the training of bed bathing and foot bathing to be more realistic.



### Caution

Choose a pajama set which does not cause color migration to the manikin. (Manikin height is approx. 62 inch)

## Oral and denture care

- Removing  
Upper denture:  
Pull the denture downward.  
Lower denture:  
Pull the denture upward.



- Setting  
Hold the denture and insert the pin of the denture into the hole of the mouth.  
Push the center and both side of denture to fix the denture firmly.

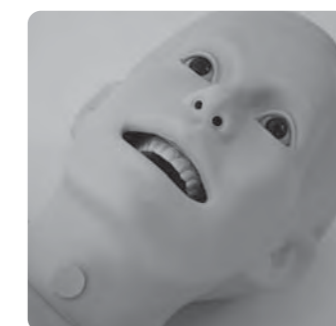
Both upper and lower denture are fixed with the pin of the denture at its center and left side.

## Oxygen inhalation



Nasal cannula can be placed for oxygen inhalation.

## Intranasal and intraoral catheter insertion



① Catheter can be inserted to stomach through nasal and oral.

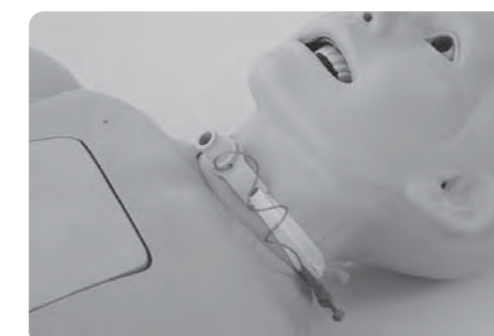
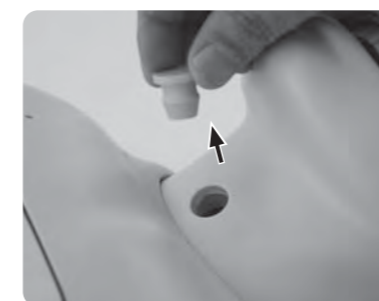
Recommended catheter size: 12Fr

### Caution

Liquid can not be injected through intranasal or intraoral catheter.

## Setting of tracheotomy catheter

① Pull up the plug.



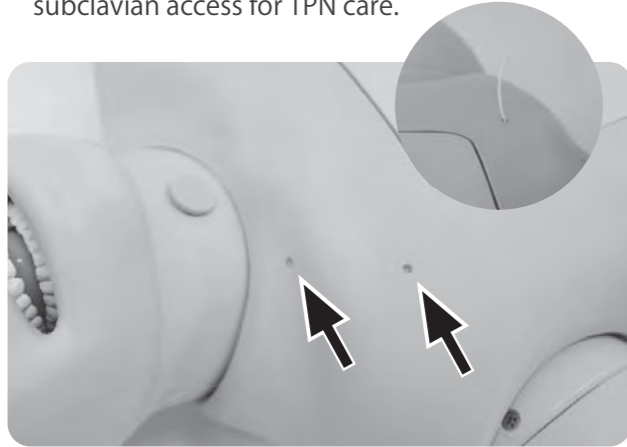
② Set and fix a tracheotomy catheter. After the training, plug the tracheotomy plug in to the tracheotomy.

Recommended tracheotomy catheter size: ID8mm, OD11mm

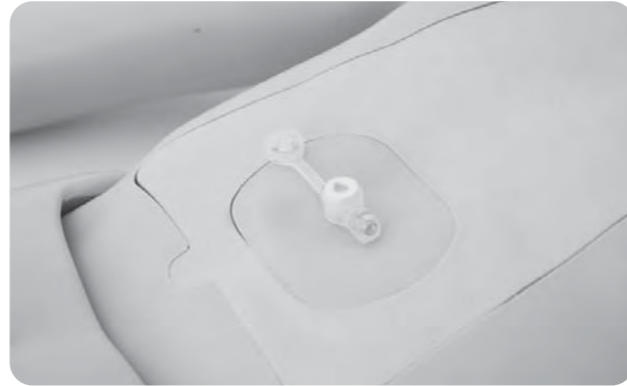
**Caution** Suction with liquid can not be performed however tracheotomy is connected to trachea of the model.

### TPN and PEG care

①Catheter can be inserted at subclavicular and subclavian access for TPN care.



②PEG catheter can be set for PEG care.  
Recommended CV catheter size: 4Fr x 60cm  
Recommended PEG catheter size: 20Fr x 34mm



**Caution** Liquid can not be injected from the holes for TPN care or PEG.

### Pressure sores care

①Pressure sore at scapula (Stage 1)



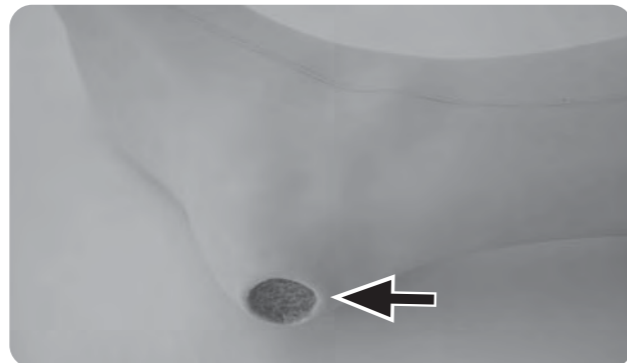
②Pressure sore at great trochanter (Stage 2)



③Pressure sore at sacral bone(Stage 4)



④Pressure sore at heel (Stage 3)



### Removal of stomach

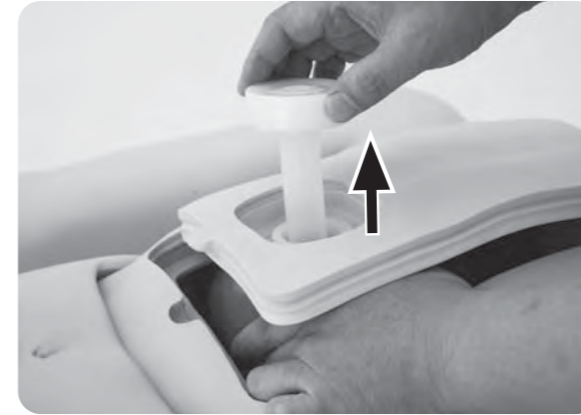
①Open the chest cover by pulling the cover at the slit.



②Remove the PEG cover.



③Hold the stomach in the model and unscrew the cap of the stomach.



④Remove the chest cover.



⑤Pull the esophagus tube from the stomach.  
The stomach can be removed from the model.



⑥Completed.Stomach can be set by reversing the steps ①-⑤.

