

VATA

Realism in Clinical Simulation

Ostomy Pouching Trainer™ Model 0270 & 0275

USER MANUAL



308 South Sequoia Parkway, Canby, Oregon 97013 USA
ph. 503.651.5050 | fax 503.651.5052 | email info@vatainc.com | www.vatainc.com



Thank you for your purchase of **VATA's Ostomy Pouching Trainer™**
Model 0270 & 0275.

The **Ostomy Pouching Trainer™ Model 0270 & 0275** will help prepare patients, their families and healthcare professionals for this life-changing event, improving their initial exposure and their future quality of life. The **Ostomy Pouching Trainer™** will facilitate the practice of proper pouching techniques to maintain healthy skin while developing good hand-eye coordination. Pre-operative teaching allows patients and their families to begin learning about ostomies prior to surgery when they are less distracted—reducing anxiety. With the **Ostomy Pouching Trainer™**, patients and healthcare staff can grasp, in a realistic, life-sized model, what they may have had difficulty understanding from pictures, especially in those cases where language or comprehension may be an obstacle. Seeing the stomas and visualizing the location and function of the various types, including the discharge from them, is essential to learning.

Proper teaching helps increase patients' understanding of their condition and the adjustments which may be necessary for achieving a satisfactory standard of life with their new stoma. That's why **VATA**, a leader in anatomical healthcare models, has created **Ostomy Pouching Trainer™ Model 0270 & 0275**, the ultimate educational tool for patients, support persons and healthcare providers. This is the most realistic and complete model for pouching offered anywhere!

Please read the entire User's Manual carefully before using the **Ostomy Pouching Trainer™** to insure that you understand the proper care and use. This will also avoid situations that may not be covered by the warranty and help you enjoy the maximum benefit.

Contact Information

Whatever your question, problem, or comment, **VATA's** Customer Service is here to help. There are five quick, easy ways to contact us, so you can choose what works best for you.

VATA Inc.

308 South Sequoia Parkway, Canby, Oregon 97013, USA

Phone: 503.651.5050

Fax: 503.651.5052

E-Mail: info@vatainc.com

Web: www.vatainc.com



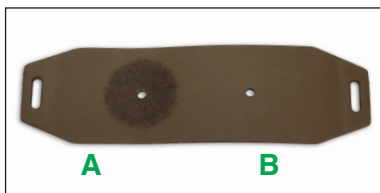
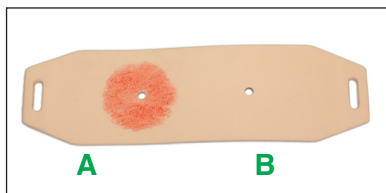
Product Components for Models 0270 & 0275

- 1 0271 Ostomy Pouching Trainer™ Pad
- 2 User Manual
- 3 0295 Simulated Urine - Liquid Concentrate
- 4 0296 Simulated Stool - Powder Concentrate
- 5 0277 Velcro Belts - Two Included
- 6 0278 Luer Lock Syringe 35 ML
- 7 0280 Urostomy Stoma, Letter "U"
- 8 0283 Flush Stoma, Letter "F"
- 9 0281 End Stoma, Letter "E"
- 10 0282 Loop Stoma, Letter "L"

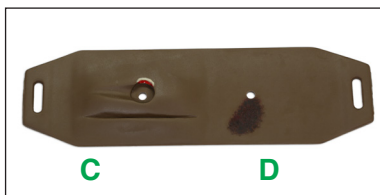
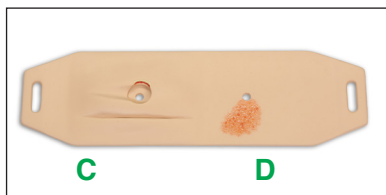


Set-Up Instructions

Ostomy Pouching Trainer™ pad with 4 stoma placement locations is reversible and rotatable



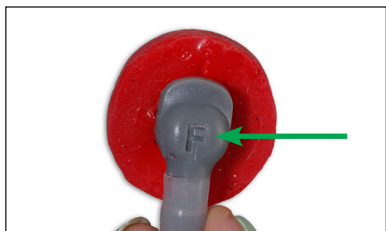
- A. Contact Dermatitis placement
- B. Standard skin placement



- C. Flush placement with rolls, folds and mucocutaneous separation – use with 0283 Flush Stoma with Letter “F”.
- D. Candidiasis placement

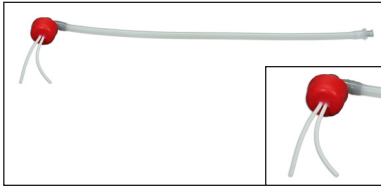


0277 Velcro belt – model is supplied with two belts. Both of the belts can be joined together when an overall length of greater than 48” is needed.

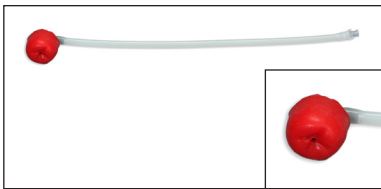


Stomas – Each stoma can be identified by the letter on the grey right angle fitting, connecting the stoma to the tubing. See Letter “F”.

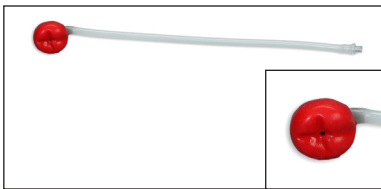
Set-Up Instructions



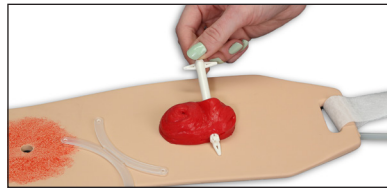
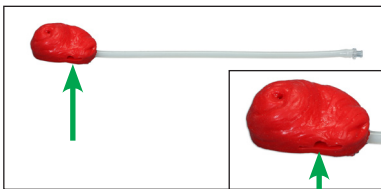
0280 Urostomy with Stents (*Letter "U"*) with attached tubing and Luer lock fitting.



0281 End Stoma (*Letter "E"*) with attached tubing and Luer lock fitting.



0283 Flush Stoma (*Letter "F"*) with attached tubing and Luer lock fitting. This stoma is used on the opening in the pad with the rolls, folds and mucocutaneous separation.



0282 Loop Colostomy Stoma (*Letter "L"*) with passageway (see arrows) for insertion of your preferred bridge (bridge not included), with attached tubing and Luer lock fitting.

Set-Up Instructions

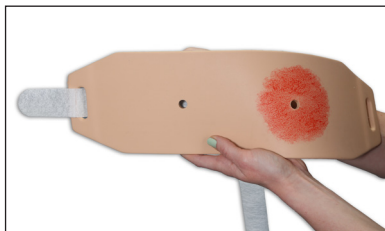
We strongly recommend that the entire User's Manual be read before using the **Ostomy Pouching Trainer™**. You will find that familiarizing yourself with the basic tasks required to simulate the many stoma pouching scenarios that may be encountered, will ensure that you can perform all the simulations the trainer is capable of.

Ostomy Pouching Trainer™ is designed to be worn over clothing.

The **Ostomy Pouching Trainer™** pad is reversible and rotatable. This permits any of the openings for stoma placement to be exposed and positioned on either the right or left side of the patient.



Select the desired stoma and the opening you wish to use on the **Ostomy Pouching Trainer™**. See page 4.



Attach the Velcro belt to the ostomy pouching pad on one side. This is best done by passing the hook end of the Velcro belt from the backside through one of the two oval belt openings of the **Ostomy Pouching Trainer™ Pad**.



Orient the Velcro hook side to face away from the center of the pad and then fold it back on itself to attach to the Velcro loop.

Two of the Velcro belts can be connected when a longer belt is needed.

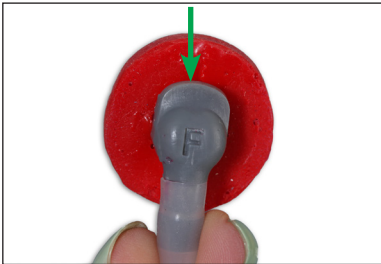


Apply barrier coating/skin prep for adhesion of pouch to pad (not included).

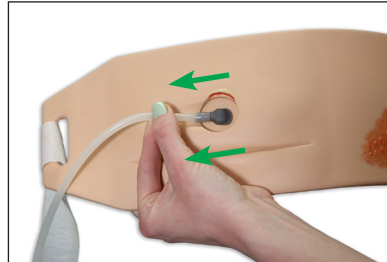
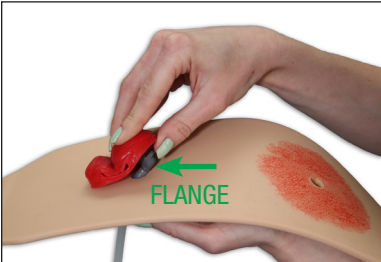
Set-Up Instructions



From the front of the pad, thread the Luer lock fitting and tubing through the selected opening.



Observe the position of the flange on the gray right angle fitting that connects the tubing to the stoma – the flange should be oriented toward the middle of the pad.

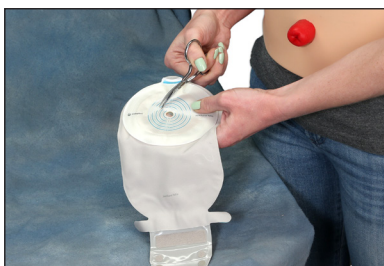


Position the tubing to exit one side of the pad near the opening for the Velcro belt. Once the tubing is inserted and the stoma comes in contact with the front of the pad, gently pull on the tubing from the backside, while pushing the stoma in from the front of the pad with your thumb until it “snaps” into place.

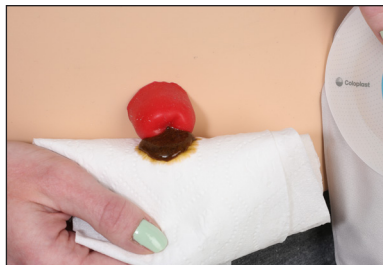
Set-Up Instructions



Place the **Ostomy Pouching Trainer™ Pad** on the patient and secure, using the Velcro belt. Repeat the process used to attach the belt to the other side of the pad.



Measure the stoma and cut the barrier to the correct size.



If using simulated stool or urine for the practice session, prepare the desired product and fill the supplied 35ml Luer lock syringe. Attach the syringe to the exposed stoma tubing. Place paper towel under the stoma opening and prime the tubing for a realistic training experience. When you see stool or urine exiting the stoma, the tubing is primed.

Set-Up Instructions



It is suggested that you have the patient practice replacing their pouch in front of a mirror to aid in developing hand-eye coordination. It is also suggested that you have the healthcare instructor intermittently push on the syringe which will cause discharge from the stoma, so the patient can experience and be prepared for what to expect.



When the training session is completed, flush the tubing and stoma with warm water until clear and remove the stoma by pushing the gray fitting from the backside while gently pulling on the stoma. Do not leave the stoma in the pad when not in use. The pad can be cleaned with soap and water.



Discard reconstituted stool after 24 hours.



The opening with the skin rolls, folds and mucocutaneous separation was designed to be used with the flush end stoma – Letter “F”. This site can be used to practice the application of ostomy pastes and waxes as well. Remove these products when the training session is completed.

Simulated Urine & Stool



0295 Simulated Urine

Liquid concentrate in a 470ml bottle. Add 450ml of distilled water and shake until mixed. Fill the 35ml Luer lock syringe and use.



0296 Simulated Stool

Five 60ml bottles with powder concentrate. To reconstitute this product, add 60ml of distilled water and shake vigorously until mixed. You can change the viscosity of the stool by adding more or less water to make it thicker or thinner. Fill the 35ml Luer lock syringe and use.

Discard reconstituted stool after 24 hours.

Care & Cleaning Instructions

The ostomy pad, stomas and stoma tubing can be cleaned using warm soapy water. Do not use any abrasive cleanser on any of the parts. Ballpoint pen will stain the various parts.

Replacement Parts & Accessories

The following items are available for purchase at www.vatainc.com.

Product #	Description
0270	Ostomy Pouching Trainer™ – lightly pigmented, complete kit – includes 1 Pad, 2 Velcro belts, 4 stomas – Urostomy, End, Loop and Flush, Luer Lock Syringe 35ml, Simulated Urine concentrate 470ml bottle, five 60ml bottles of Simulated Stool powder. User’s Manual and storage box.
0271	Replacement Ostomy Pouching Trainer™ – lightly pigmented, includes 1 Pad and 2 Velcro belts
0275	Ostomy Pouching Trainer™ – darkly pigmented, complete kit – includes 1 Pad, 2 Velcro belts, 4 stomas – Urostomy, End, Loop and Flush, Luer Lock Syringe 35ml, Simulated Urine concentrate 470ml bottle, five 60ml bottles of Simulated Stool powder. User’s Manual and storage box.
0276	Replacement Ostomy Pouching Trainer™ – darkly pigmented, includes 1 Pad and 2 Velcro belts
0277	Velcro Belt for use with Pad.
0278	Luer lock Syringe, 35ml
0280	Urostomy Stoma with stents and attached tubing. Letter “U”
0281	End Stoma with attached tubing. Letter “E”
0282	Loop Stoma with opening for insertion of your bridge, with attached tubing. Letter “L”
0283	Flush Stoma with attached tubing. Letter “F”
0295	Simulated Urine, 470ml bottle with liquid concentrate
0296	Simulated Stool, powder concentrate, five 60ml bottles with powder

You Might Also Like These Products...



Otto Ostomy™ – Advanced Model 0310



**Seymour II™ Wound Care
Model – 0910**



**Seymour II™ Wound Care
Model – 0920**



Freddie Fistula™ Skills Trainer – 0230